



THE INTERNATIONAL CRUISE INDUSTRY IN QUÉBEC / ST. LAWRENCE

A 2016 economic impact analysis depicts an industry that is delivering an increasing number of passengers to ports (●) in the St. Lawrence region, generating economic benefits that are felt across the province.

REGIONAL OVERVIEW



**2016
CRUISE
INDUSTRY
SPENDING**

CRUISE LINES

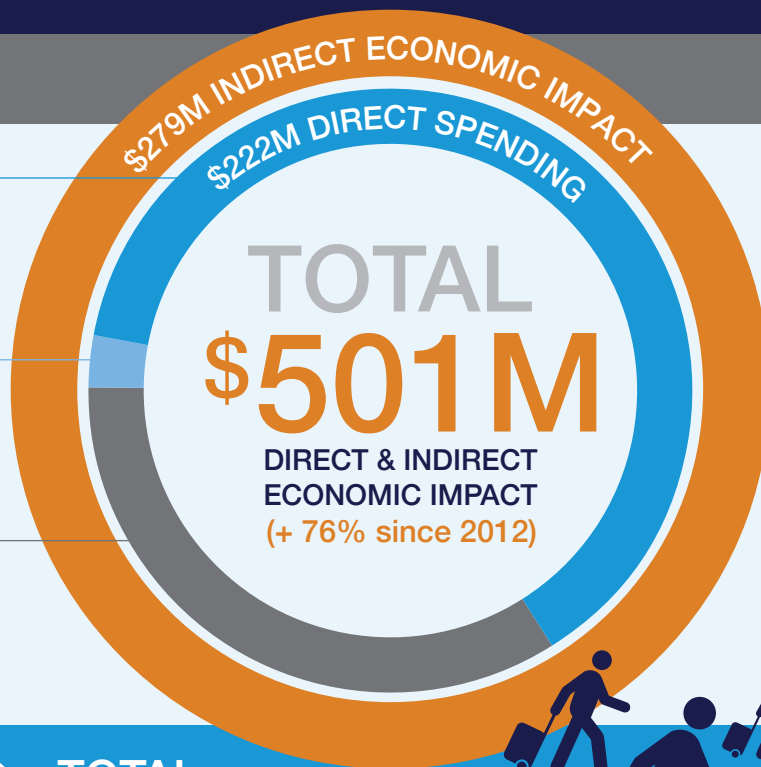
\$129M
(+ 39% since 2012)

CREW

\$2M
(+ 12% since 2012)

PASSENGERS

\$91M
(+ 102% since 2012)



250,000

**TOTAL
PASSENGER TRAFFIC**
(+ 10% since 2012)



**TOTAL JOBS
(DIRECT & INDIRECT)**

3,700
+ 71% since 2012



**TOTAL WAGES AND SALARIES
(DIRECT & INDIRECT)**

\$151M
+ 56% since 2012

Source: Business Research & Economic Advisors: International Cruise Industry in Canada Economic Impact Analysis, April 2017



**CRUISE
THE SAINT
LAWRENCE**

Cruise the Saint Lawrence Association
84 rue St-Germain Est, suite 206
Rimouski (Quebec) G5L 1A6

info@cruisesaintlawrence.com
418-725-0135
cruisesaintlawrence.com

Cruise Lines International Association -
North West & Canada
100-1111 Hastings St., Vancouver, BC V6E 2J3

info@clia-nwc.com
604-681-9515
clia-nwc.com

CLIA
CRUISE LINES INTERNATIONAL ASSOCIATION
NORTH WEST & CANADA